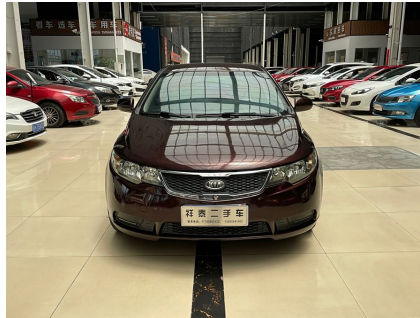


Freddy 2009 1.6L MT GL



SellingCar180
machuang@romacredit.com



Appearance: The paint is well maintained, the body structure has not been repaired, and there have been no major accidents. Interior: Clean and tidy. The safety indicator lights are normal, the airbags and other passive safety items are normal, the electronic devices in the vehicle are in good use, and the static and dynamic equipment in the vehicle is complete. Driving: There are no problems with the vehicle's ignition, starting, acceleration, cornering, deceleration, and braking. The acceleration is rapid, the power output is smooth and comfortable, and there is no idle jitter. Overall: The overall vehicle condition is average. The body frame structure has no deformation or distortion, and there are no signs of fire or water. There are traces of spray paint on the body, and the overall paint surface is good, excluding vehicles with major accidents. It has a wide field of view and is a good choice for training. The space is spacious and bright, and the ventilation is good. It is suitable for family travel.

Overview

| | | |
|--------------------------------|----------------------------------|--------------------------------|
| POST_ID 458341 | Make Yueda Kia | Series Freddy |
| Model 2009 1.6L MT GL | First Registered October 1, 2010 | Fuel Type Gasoline |
| Miles 137000 km | Condition Used Non-Accident | Exterior Color Champagne/Brown |
| Transmission Manual | Engine 1.6L 123HP L4 | Drive Type Front 2WD |
| Steering LHD (Left Hand Drive) | FOB Price \$ 2,144 | |

Contact Details

SellingCar180

machuang@romacredit.com

Chinese Car Exports | SellingCar180

SellingCar180